

# Hydropad W/Integrated Side Gutter

## Model 1VQ386, 8'L X 8'W

Hydropad above ground steel wash rack systems solve SWPPP requirements for vehicle and equipment wash/collection. Design a wash rack for; drive through or drive-in-back-out, overspray containment walls, awnings, remote control stations, various wash water collection and recycling options, vehicle/wheel and undercarriage wash and raised catwalks.

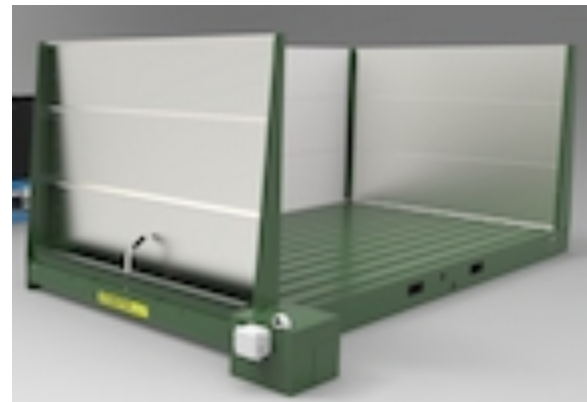
- Modular design to provide any size wash rack required
- Capture wash water and solid wastes
- Promote EPA and SWPPP compliance
- Easy to deploy or re-deploy

### Standard

- 2 ton per axle

### Options

- 12 ton per axle
- Pad connection kit
- Side wall; 4' 6' and 8'
- Gutter side wall; 4' 6' and 8'
- Rail wall, 4', 6' and 8'
- Access ramps;
  - 61.25"L X 24" W, rated 2 ton
  - 119"L X 24"W, rated 2 ton
  - 60"L X 24"W, rated 30 ton
  - 112"L X 48"W, rated 30 ton
- Rain tarps
- Sump box and pump for Hydropad fluid discharge
- Drag conveyor for automatic solid removal



*Hydropad wash rack; 8' wide X 8' long with 6' walls on 3 sides makes for the perfect indoor wash rack. Example only.....design exactly what you need.*

### Specifications

Weight Lbs (kg)	2 ton	949	(430)
	12 ton	1268	(575)
Dimensions Ft (m)	8' (2.44)	X 8' (2.44)	X 10" (.25)

Specifications 2023

Subject to change without notice